



ASX Announcement

Wednesday 30th October 2019

New Results Deliver Big Lift in Cortadera's Open Pit Potential

Drilling also Continues to Demonstrate Strong Continuity Across New High Grade Zone

Highlights

- Drilling across the centre of the main porphyry at the Company's Cortadera coastal range copper-gold discovery in Chile is continuing to reveal large-scale open pit and underground growth potential
- New results from diamond drill hole CRP0018D and visual confirmations from another two new diamond drill holes have uncovered mineralised porphyry extending from shallow depths and from surface, across a wide extent of the main porphyry, not previously tested by historical drilling
- CRP0018D has also delivered a fourth significant intersection across the new high grade zone, with pending results from CRP0019D and CRP0020D expected to finalise definition of an initial high grade core to the main porphyry at Cortadera

Two Significant Results Recorded for CRP0018D

**264m grading 0.4% copper & 0.2g/t gold from 52m down-hole depth
&**

150m grading 0.6% copper & 0.3g/t gold from 484m down-hole depth

including a Higher Grade Zone comprising

82m grading 0.8% copper & 0.4g/t gold from 496m down-hole depth
(plus additional silver and molybdenum credits)

- CRP0019D is complete, with mineralised porphyry being intersected from 120m to 250m down-hole depth in addition to a wide zone of mineralised and strongly mineralised porphyry from 650m to end of hole (988.2m down-hole depth).
- CRP0020D is underway and is planned to be drilled to a down-hole depth of 1,000m. Mineralised and strongly mineralised porphyry have been recorded from surface to its current depth of 313m down-hole.
- Expansion drill testing of the two largest of Cortadera's four porphyry centres is scheduled to commence shortly following completion of CRP0020D
- Assay results from diamond drill hole CRP0019D are expected to be released within the coming fortnight followed by first results from CRP0020D

ASX CODE

HCH

Contact

Mr Christian Easterday
Managing Director

E: admin@hotchili.net.au

www.hotchili.net.au





Hot Chili Limited (ASX code HCH) ("Hot Chili" or "Company") is pleased to deliver further strong results from the third diamond drill hole of the Company's phase 2 drill programme at the Cortadera copper-gold porphyry discovery, located along the Chilean coastal range, 600km north of Santiago.

Initial drilling has focussed on the definition of a recently discovered high grade core to Cuerpo 3, the largest of the four porphyry centres discovered to date at Cortadera.

New results from diamond (DD) drill hole CRP0018D have continued to confirm strong grade continuity across the high grade zone, recording a significant intercept of 82m grading 0.8% copper and 0.4g/t gold within a broader result of 150m grading 0.6% copper and 0.3g/t gold from 434m down-hole depth.

In addition, CRP0018D recorded a wide shallow drilling intersection from 52m down-hole depth comprising 264m grading 0.4% copper and 0.2g/t gold. Approximately 250m to the southwest of CRP0018D, DD drill hole CRP0020D has recorded a wide intersection of mineralised and strongly mineralised porphyry from surface over a down-hole width of 313m so far.

These results, in addition to pending results from CRP0019D, confirm mineralised porphyry extends from shallow depths across a large extent of the main porphyry which had not previously been drill tested.

Confirmation of large up-dip extensions to Cuerpo 3 adds significantly to the open pit growth potential of Cortadera - a key focus for Hot Chili that significantly de-risks any potential future, higher grade, underground development opportunity at Cortadera.

The Company considers that Cortadera's potential size and significance is only just beginning to be revealed, and that further drilling looks likely to cement Cortadera as one of the most significant Chilean copper porphyry discoveries of the past decade.

Diamond Drilling Update- Expansion Drilling Set to Commence Shortly

Hot Chili have received all assay results for the third DD drill hole of the Company's phase 2 drill programme (CRP0018D) at Cortadera. A fourth DD drill hole (CRP0019D) is also complete and a fifth diamond drill hole is well underway (CRP0020D) as the final hole directed towards the definition of an initial high grade core to the main porphyry.

Figure 1, 2 and 3 shows the location of new results from CRP0018D as well as the location of CRP0019D and CRP0020D.

CRP0018D was drilled as a vertical hole and was terminated early at a depth of 763m owing to the intersection of several late-stage and barren N-S trending vertical dykes (typically ranging in width between 8m and 20m). Although not optimally designed in relation to the presence of vertical, poorly mineralised and barren dykes, the hole was successful in recording two wide significant intersections as displayed on cross-section in figure 3.

CRP0019D was completed from the same platform as CRP0018D and was angled towards the SW at 80 degrees dip. Similar to CRP0018D, the hole has intersected two wide zones of mineralised and strongly mineralised porphyry separated by zones of vertical, poorly





mineralised and barren dykes. CRP0019D was completed to a depth of 988.2m and results are expected to be released in the coming weeks.

CRP0020D is a step-out DD drill hole located on the same section as diamond holes CRP0018D and 19D as displayed in figure 3. The hole is located approximately 250m away from CRP0018D, oriented at 60 degrees dip towards the NE, and is designed to cut -across the centre of the main porphyry with a planned depth of 1,000m.

The DD drill hole was designed to be collared within skarn altered sediments along the southern margin of the main porphyry. Importantly however, mineralised and strongly mineralised host-porphyry has been recorded from surface to its current depth at 313m down-hole depth.

The results from CRP0020D are eagerly awaited as they point to a potentially large, up-dip extension to the main porphyry and once again confirm that the largest porphyry at Cortadera remains open and is extending.

Double-shift diamond drilling is scheduled to continue, with expansion drilling set to commence across Cuerpo 2 and 3 in the coming weeks (upon completion of CRP0020D). Drill testing of the northern and southern extensions to the main porphyry (Cuerrpo 3) will be an initial focus of planned expansion drilling.

Exploration Work Streams Underway Across Large Growth Targets

Over the past two months, the Company's exploration team have been advancing multiple exploration work streams to bring-forward drilling across several large, near-by targets, which are considered to have the potential to deliver step-change growth.

Workstreams being undertaken include surface geochemical programmes, litho-structural mapping, petrographic and age date sampling, geophysical review and modelling, and environmental studies related to regulatory applications for drilling.

The Company expects to release results of this work over the coming weeks, which will include an update on the large Cortadera North target identified approximately 2km to the north of Cortadera but never previously drilled (as outlined in Hot Chili's previous ASX announcement, dated 24th July 2019).

The Company looks forward to releasing its next set of diamond drill results and expects a strong period of news flow to continue into the New Year from its accelerating activities at Cortadera.

For more information please contact:

Christian Easterday

Managing Director

Tel: +61 8 9315 9009

Email: christian@hotchili.net.au

or visit Hot Chili's website at www.hotchili.net.au





Table 1 New Significant DD Drill Results at Cortadera

Hole_ID	Coordinates			Azim	Dip	Hole Depth	Intersection		Interval (m)	Copper (% Cu)	Gold (g/t Au)	Silver (ppm Ag)	Molybdenum (ppm Mo)
	North	East	RL				From	To					
CRP0018D	6813995	336449	1035	360	-90	763.2	56	320	264	0.4	0.2	0.5	18
							484	634	150	0.6	0.3	1.0	54
	<i>including</i>						496	578	82	0.8	0.4	1.5	50



Hot Chili Limited

ACN 130 955 725

First Floor, 768 Canning Highway, Applecross, Western Australia 6153

PO Box 1725, Applecross, Western Australia 6953

P: +61 8 9315 9009

F: +61 8 9315 5004

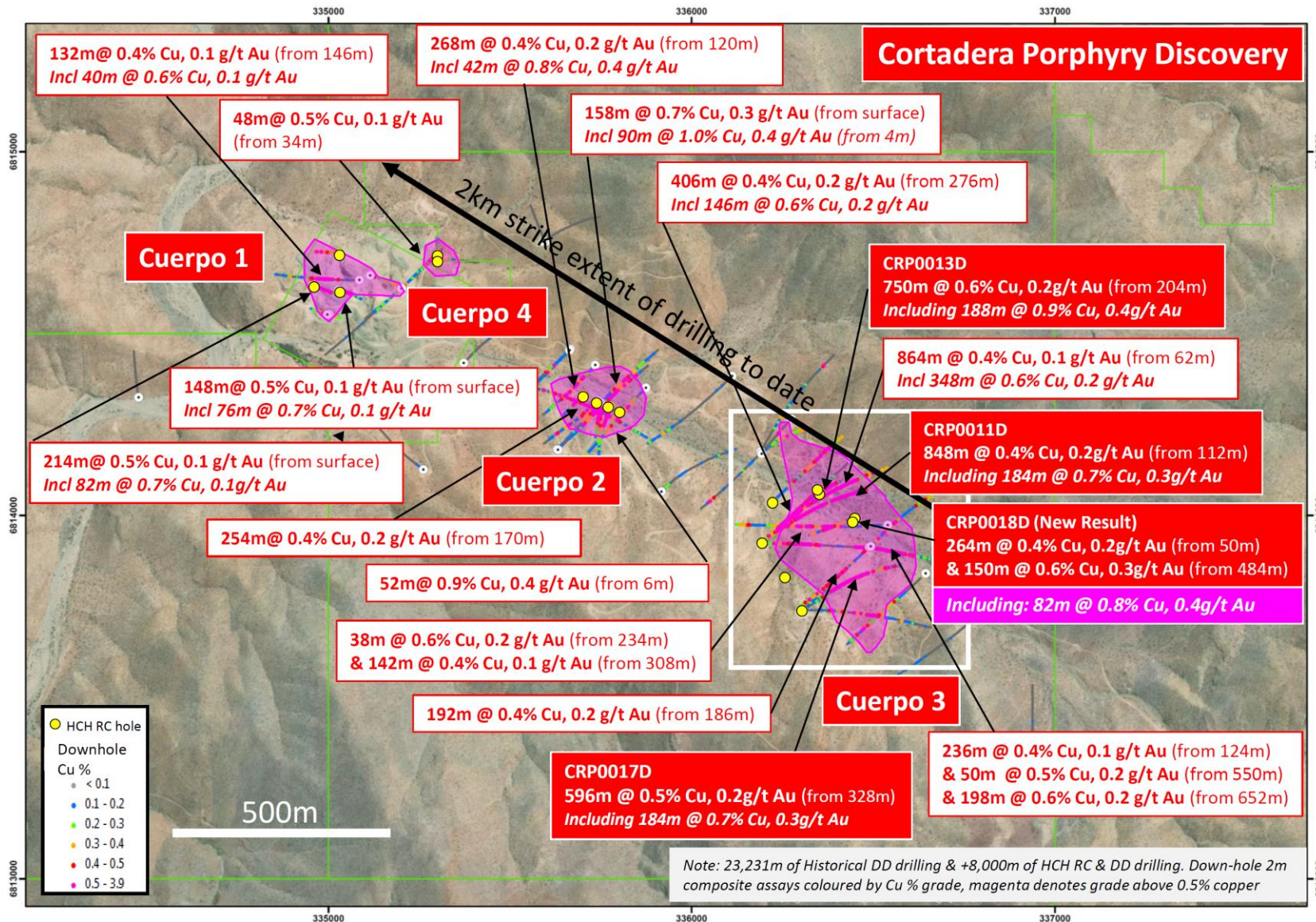
www.hotchili.net.au

Figure 1 Plan view across the Cortadera discovery area displaying significant historical copper-gold DD intersections across Cuerpo 1, 2 and 3 tonalitic porphyry intrusive centres. Note the location of Type Sections A and B, and the inset plan area for Cuerpo3 associated with the following figures. The new HCH drilling intersections recorded in CRP0018D, CRP0017D, CRP0011D and CRP0013D are also annotated.

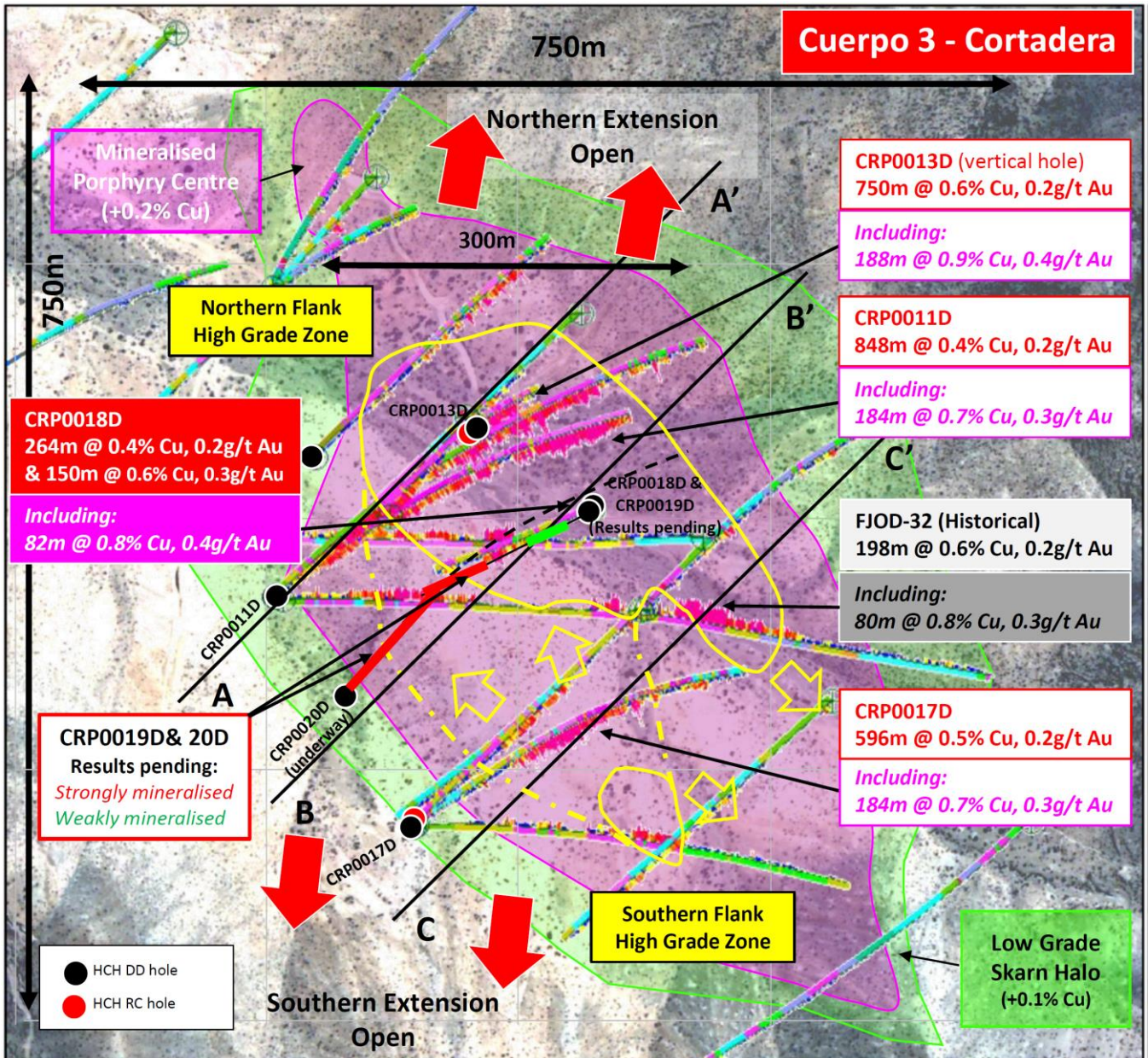


Figure 2 Plan view of Cuerpo 3 - the Main porphyry of the four porphyry centres discovered to date at Cortadera. The plan displays the location and basic geology of the mineralised tonalitic host porphyry in relation to the location of significant new results released for CRP0017D, CRP0011D and CRP0013D. Note the growing extent of the modelled higher grade copper which currently accounts for the Northern and Southern Flank High Grade Zone (solid yellow isosurface)

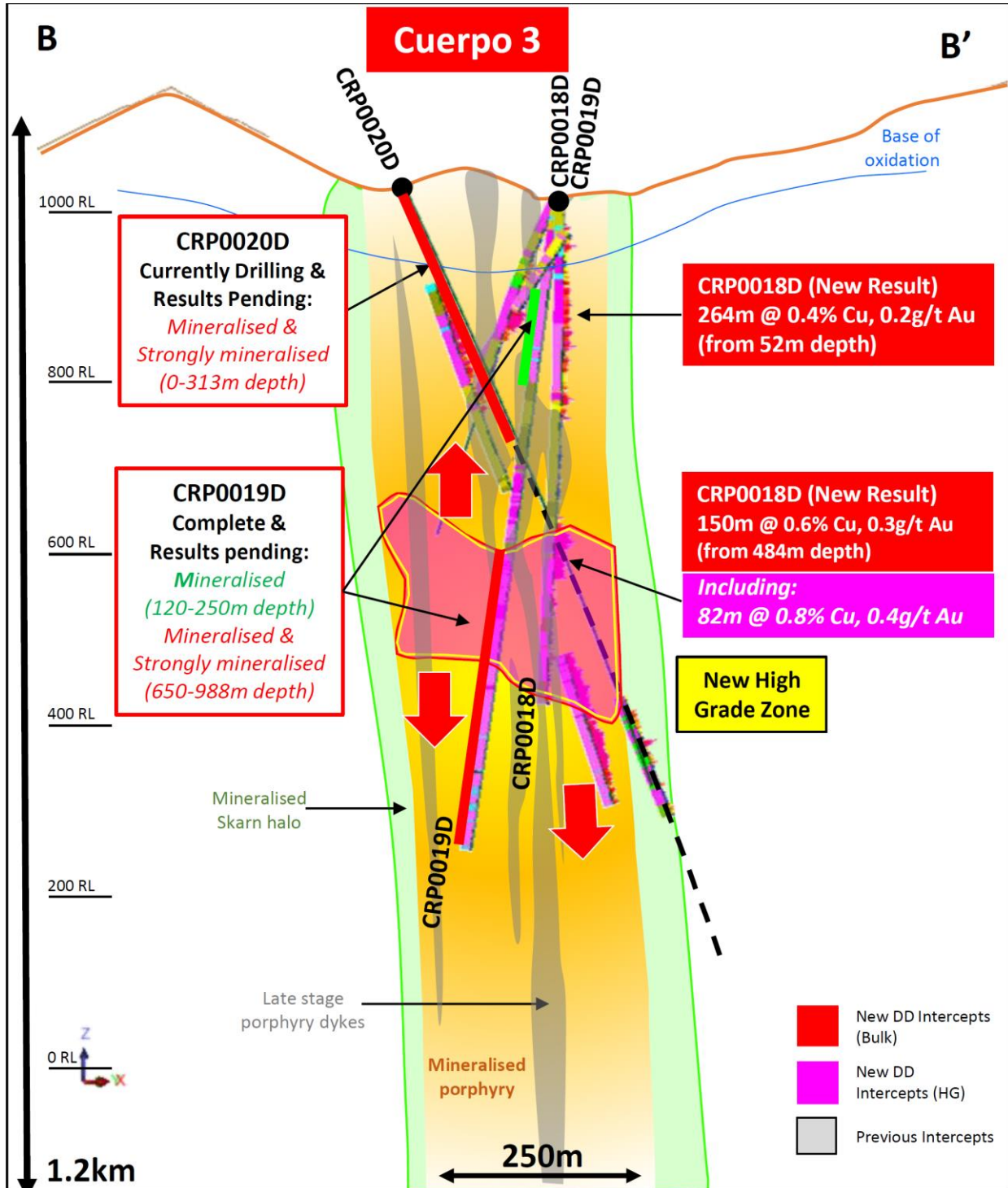


Figure 3 Type Section B displaying historical new DD drill results and an interpretation of Cuerpo 3 - the main host tonalitic porphyry intrusion at Cortadera. Note the location hole CRP0018D, the new high grade zone and the influence of late-stage poorly mineralised and barren dykes. Results for CRP0019D are pending release and the current hole CRP0020D which has recorded a significant shallow intersection of mineralised and strongly mineralised porphyry from surface.

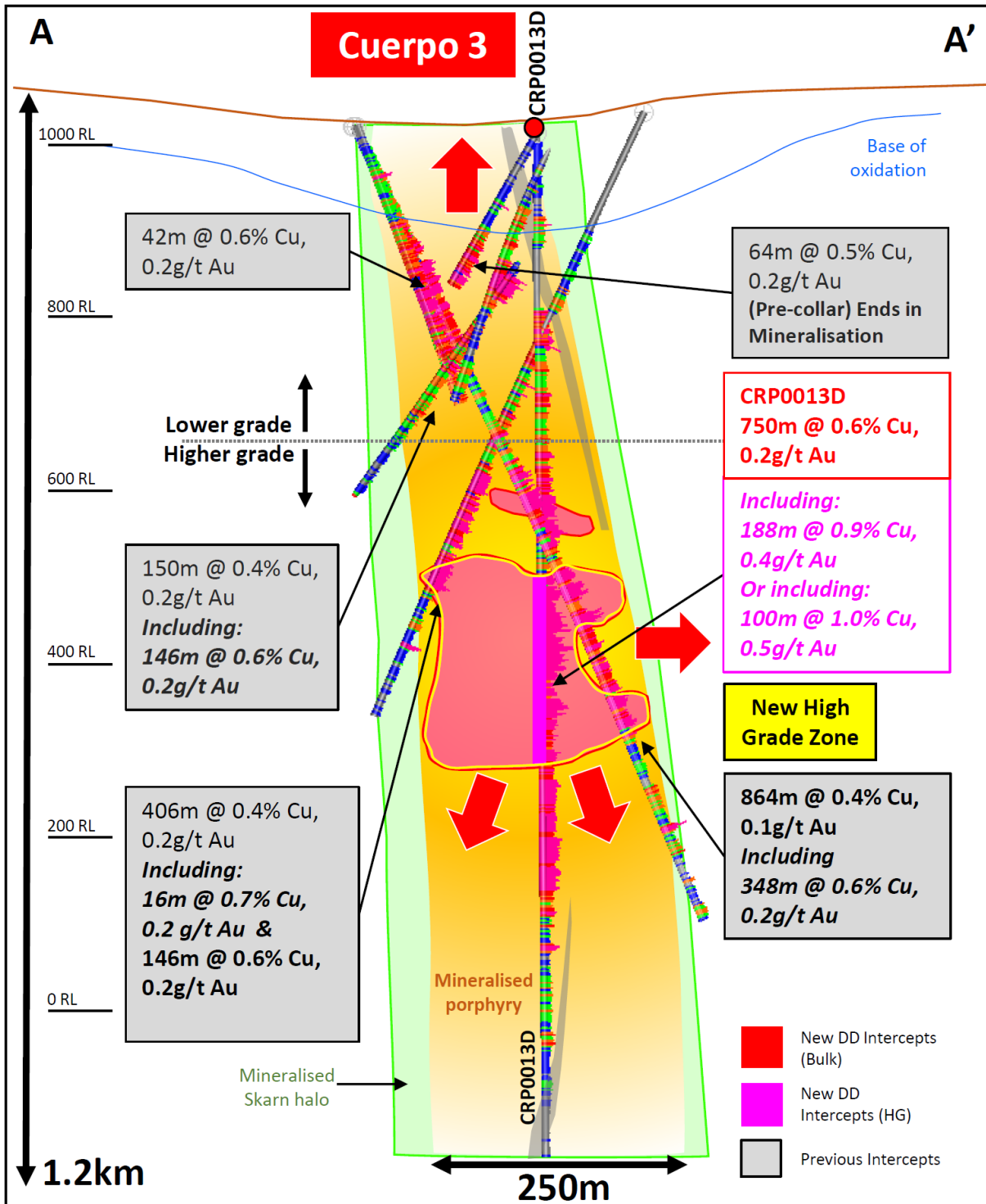


Figure 4 Type Section A displaying historical DD drill results and an interpretation of Cuerpo 3 - the main host tonalitic porphyry intrusion at Cortadera. Note the location hole CRP0013D, northern flank high grade zone and a distinct increase in grade below 400m vertical depth

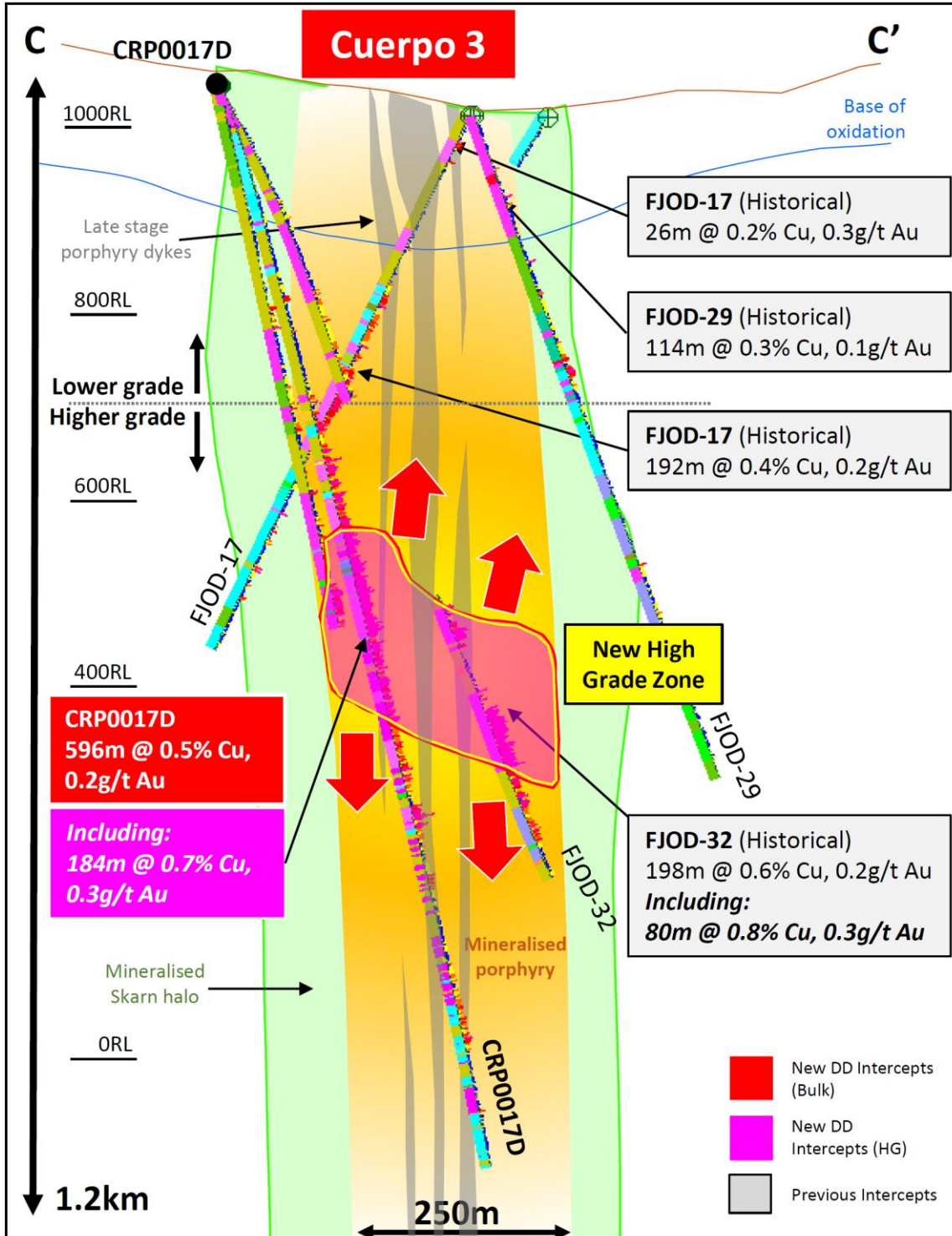


Figure 5 Type Section C displaying historical DD drill results and an interpretation of Cuerpo 3 - the main host tonalitic porphyry intrusion at Cortadera. Note the location hole CRP0017D, the new high grade zone and a distinct increase in grade below 400m vertical. CRP0017D results have significantly extended the high grade zone.

About Cortadera

Cortadera is a privately-owned, major copper-gold porphyry discovery located along the Chilean coastal range, where historical world-class discovery drill results have only recently been publicly released by Hot Chili in February 2019.

Importantly, Cortadera lies 14km from the Company's large-scale Productora copper development and adjacent to the high grade El Fuego satellite copper projects, as displayed in Figure 5 below.

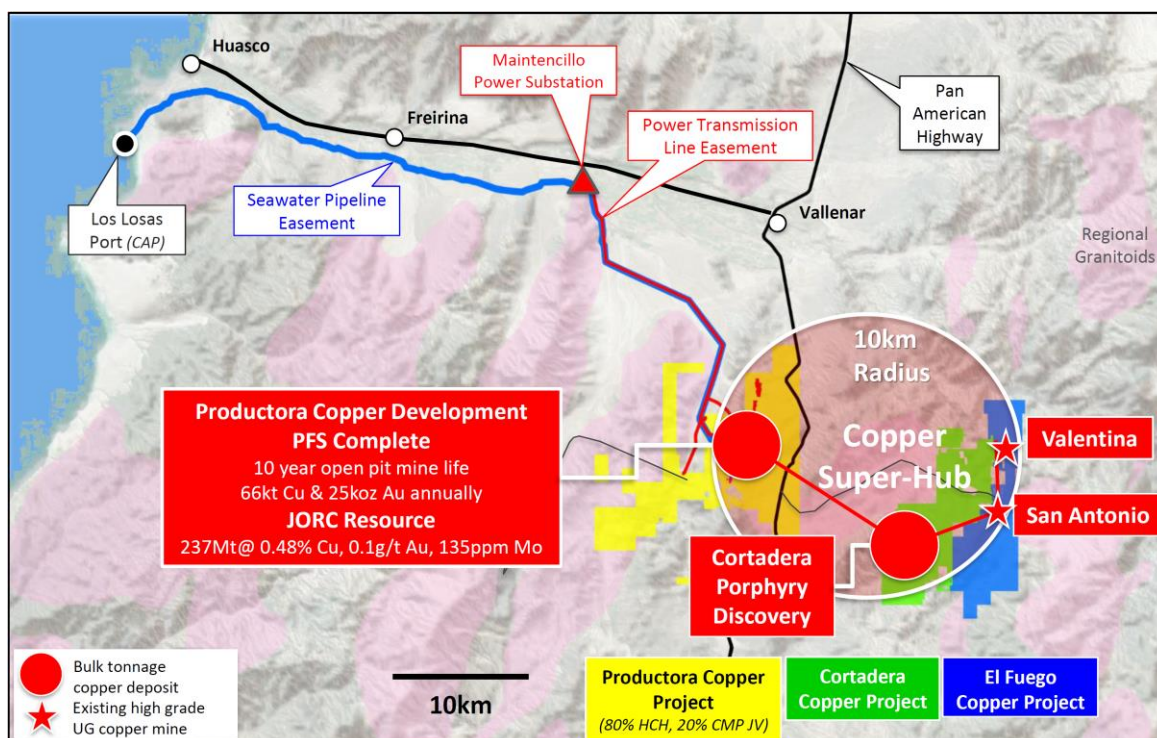


Figure 6 Location of Productora and the Cortadera discovery in relation to the consolidation of new growth projects and coastal range infrastructure

On 22 February 2019, Hot Chili announced the execution of a formal Option Agreement to acquire a 100% interest in Cortadera. In early April, the Company commenced a confirmation drilling programme comprising 17 holes.

The drilling has confirmed and extended areas of surface enrichment and wide, higher-grade, copper-gold sulphide mineralisation at depth, which had not previously been closed off by 23,000m of historical diamond drilling.

Hot Chili's recent two drill holes at Cuerpo 3 (the largest of the four porphyries discovered to date) include two of the best intercepts to date at the project and rate as some of the worlds' stand-out copper-gold porphyry drill results ever recorded globally. The Cuerpo 3 porphyry remains open to the north, south and at depth. Significant intersections (refer to ASX announcement 16th October 2019) include:

- 750m grading 0.6% copper and 0.2g/t gold from 204m down-hole depth (including 188m grading 0.9% copper and 0.4g/t gold)

Hot Chili Limited

ACN 130 955 725

First Floor, 768 Canning Highway, Applecross, Western Australia 6153

PO Box 1725, Applecross, Western Australia 6953

P: +61 8 9315 9009

F: +61 8 9315 5004

www.hotchili.net.au



- 848m grading 0.4% copper and 0.2g/t gold from 112m down-hole depth (including 184m grading 0.7% copper and 0.3g/t gold)
- 864m grading 0.4% copper and 0.1g/t gold from 62m down-hole depth (including 348m grading 0.6% copper and 0.2g/t gold), and
- 596m grading 0.5% copper and 0.2g/t gold from 328m down-hole depth (including 184m grading 0.7% copper and 0.3g/t gold)

Cortadera is shaping up as a globally significant standalone copper-gold project which can utilise the Productora project resources, and leverage from a central processing and combined infrastructure approach along the coastline of Chile.

The Company's recent confirmation of a higher grade bulk tonnage underground development opportunity at Cortadera places Hot Chili in a unique position amongst potential large-scale global copper-gold developments.



Qualifying Statements

Competent Person's Statement- Exploration Results

Exploration information in this Announcement is based upon work compiled by Mr Christian Easterday, the Managing Director and a full-time employee of Hot Chili Limited whom is a Member of the Australasian Institute of Geoscientists (AIG). Mr Easterday has sufficient experience that is relevant to the style of mineralisation and type of deposit under consideration and to the activity which he is undertaking to qualify as a 'Competent Person' as defined in the 2012 Edition of the 'Australasian Code for Reporting of Exploration Results, Mineral Resources and Ore Reserves' (JORC Code). Mr Easterday consents to the inclusion in the report of the matters based on their information in the form and context in which it appears.

Competent Person's Statement- Mineral Resources

The information in this Announcement that relates to the Productora Project Mineral Resources, is based on information compiled by Mr J Lachlan Macdonald and Mr N Ingvar Kirchner. Mr Macdonald is employed by AMC Consultants (AMC), and is a Member of the Australasian Institute of Mining and Metallurgy (AusIMM). Mr Kirchner is employed by AMC Consultants (AMC). AMC has been engaged on a fee for service basis to provide independent technical advice and final audit for the Productora Project Mineral Resource estimates. Mr Kirchner is a Fellow of the Australasian Institute of Mining and Metallurgy (AusIMM) and is a Member of the Australian Institute of Geoscientists (AIG). Both Mr Macdonald and Mr Kirchner have sufficient experience that is relevant to the style of mineralisation and type of deposit under consideration and to the activity being undertaken to qualify as a Competent Person as defined in the 2012 Edition of the 'Australasian Code for Reporting of Exploration Results, Mineral Resources and Ore Reserves' (the JORC Code 2012).

Competent Person's Statement- Ore Reserves

The information in this Announcement that relates to Productora Project Ore Reserves, is based on information compiled by Mr Carlos Guzmán, Mr Boris Caro, Mr Leon Lorenzen and Mr Grant King. Mr Guzmán is a Fellow of the Australasian Institute of Mining and Metallurgy (AusIMM), a Registered Member of the Chilean Mining Commission (RM- a 'Recognised Professional Organisation' within the meaning of the JORC Code 2012) and a full time employee of NCL Ingeniería y Construcción SpA (NCL). Mr Caro is a former employee of Hot Chili Ltd, now working in a consulting capacity for the Company, and is a Member of the Australasian Institute of Mining and Metallurgy (AusIMM) and a Registered Member of the Chilean Mining Commission. Mr Lorenzen is employed by Mintrex Pty Ltd and is a Chartered Professional Engineer, Fellow of Engineers Australia, and is a Fellow of the Australasian Institute of Mining and Metallurgy (AusIMM). Mr King is employed by AMEC Foster Wheeler (AMEC FW) and is a Member of the Australasian Institute of Mining and Metallurgy (AusIMM). NCL, Mintrex and AMEC FW have been engaged on a fee for service basis to provide independent technical advice and final audit for the Productora Project Ore Reserve estimate. Mr. Guzmán, Mr Caro, Mr Lorenzen and Mr King have sufficient experience which is relevant to the style of mineralisation and type of deposit under consideration, and to the activity which they are undertaking to qualify as a Competent Person as defined in the 2012 Edition of the 'Australasian Code for Reporting of Exploration Results, Mineral Resources and Ore Reserves'.

Forward Looking Statements

This Announcement is provided on the basis that neither the Company nor its representatives make any warranty (express or implied) as to the accuracy, reliability, relevance or completeness of the material contained in the Announcement and nothing contained in the Announcement is, or may be relied upon as a promise, representation or warranty, whether as to the past or the future. The Company hereby excludes all warranties that can be excluded by law. The Announcement contains material which is predictive in nature and may be affected by inaccurate assumptions or by known and unknown risks and uncertainties and may differ materially from results ultimately achieved.

The Announcement contains "forward-looking statements". All statements other than those of historical facts included in the Announcement are forward-looking statements including estimates of Mineral Resources. However, forward-looking statements are subject to risks, uncertainties and other factors, which could cause actual results to differ materially from future results expressed, projected or implied by such forward-looking statements. Such risks include, but are not limited to, copper, gold and other metals price volatility, currency fluctuations, increased production costs and variances in ore grade recovery rates from those assumed in mining plans, as well as political and operational risks and governmental regulation and judicial outcomes. The Company does not undertake any obligation to release publicly any revisions to any "forward-looking statement" to reflect events or circumstances after the date of the Announcement, or to reflect the occurrence of unanticipated events, except as may be required under applicable securities laws. All persons should consider seeking appropriate professional advice in reviewing the Announcement and all other information with respect to the Company and evaluating the business, financial performance and operations of the Company. Neither the provision of the Announcement nor any information contained in the Announcement or subsequently communicated to any person in connection with the Announcement is, or should be taken as, constituting the giving of investment advice to any person.

JORC Code, 2012 Edition – Table 1 report template

Section 1 Sampling Techniques and Data

(Criteria in this section apply to all succeeding sections.)

Criteria	JORC Code explanation	Commentary
Sampling techniques	<ul style="list-style-type: none"> <i>Nature and quality of sampling (eg cut channels, random chips, or specific specialised industry standard measurement tools appropriate to the minerals under investigation, such as down hole gamma sondes, or handheld XRF instruments, etc). These examples should not be taken as limiting the broad meaning of sampling.</i> <i>Include reference to measures taken to ensure sample representivity and the appropriate calibration of any measurement tools or systems used.</i> <i>Aspects of the determination of mineralisation that are Material to the Public Report.</i> <i>In cases where 'industry standard' work has been done this would be relatively simple (eg 'reverse circulation drilling was used to obtain 1 m samples from which 3 kg was pulverised to produce a 30 g charge for fire assay'). In other cases more explanation may be required, such as where there is coarse gold that has inherent sampling problems. Unusual commodities or mineralisation types (eg submarine nodules) may warrant disclosure of detailed information.</i> 	<p>This announcement updates activities at Hot Chili Limited's ("Hot Chili" or the "Company") Cortadera Project. This includes assay results from the current drilling programme being undertaken at the Cortadera copper-gold porphyry discovery.</p> <p>Reverse circulation drilling (RC) was used to produce a 1m bulk sample and representative 2m cone split samples (nominally a 12.5% split) were collected using a cone splitter.</p> <p>Geological logging was completed, and mineralised sample intervals were determined by the geologists to be submitted as 2m samples for RC drilling. In RC intervals assessed as unmineralised, 4m composite (scoop) samples were collected for laboratory for analysis. If these 4m composite samples return results with anomalous grade the corresponding original 2m split samples are then routinely submitted to the laboratory for analysis.</p> <p>The samples were crushed and split at the laboratory, with up to 3kg pulverised, with a 50g samples analysed by Industry standard methods.</p> <p>The sampling techniques used are deemed appropriate for exploration and resource development purposes for this type of mineralisation.</p> <p>The data compiled for historical drilling at the Cortadera project has been collated from SCM Carola documents.</p> <p>Historical drilling at the Cortadera project is diamond core (DD). There have been 29 diamond holes drilled for a total of 19,268m. A further 10 diamond holes for a further 3,963m has been completed along-strike at Purisima..</p> <p>Historical and Hot Chili diamond sampling was predominantly HQ3 (61.24mm) half core. 99% of the sample data is comprised of 2m composited samples (which were taken at every 2m interval).</p> <p>These results comprise 30g fire assay for gold, and for copper, either 4-acid or 3-acid digest followed by either an ICP-MS, ICP-AAS or HF-ICP-AES.</p> <p>Hot Chili Limited ("the Company") has verified as much as possible the location, orientation, splitting and sampling methods, analytical techniques, and assay values. The Company has not</p>

Criteria	JORC Code explanation	Commentary
		completed a comprehensive review of the SCM Carola QA/QC data but notes that a substantial amount of QAQC data is available for review and the Company has undertaken a high level initial review of the SCM Carola QA/QC data.
<i>Drilling techniques</i>	<ul style="list-style-type: none"> <i>Drill type (eg core, reverse circulation, open-hole hammer, rotary air blast, auger, Bangka, sonic, etc) and details (eg core diameter, triple or standard tube, depth of diamond tails, face-sampling bit or other type, whether core is oriented and if so, by what method, etc).</i> 	<p>Hot Chili's Reverse Circulation drilling used 140 to 130mm diameter drill bits. RC drilling employed face sampling hammers ensuring contamination during sample extraction is minimised.</p> <p>Historical and Hot Chili diamond drilling used HQ bits (HQ; 96mm external, 61.24mm internal).</p>
<i>Drill sample recovery</i>	<ul style="list-style-type: none"> <i>Method of recording and assessing core and chip sample recoveries and results assessed.</i> <i>Measures taken to maximise sample recovery and ensure representative nature of the samples.</i> <i>Whether a relationship exists between sample recovery and grade and whether sample bias may have occurred due to preferential loss/gain of fine/coarse material.</i> 	<p>Drilling techniques to ensure adequate RC sample recovery and quality included the use of "booster" air pressure. Air pressure used for RC drilling was 700-800psi.</p> <p>All DD drilling undertaken utilised HQ core with sampling undertaken via half core cutting and 2m sample intervals, aligned with historical DD sampling and drilling techniques.</p> <p>Logging of all samples followed established company procedures which included recording of qualitative fields to allow discernment of sample reliability. This included (but was not limited to) recording: sample condition, sample recovery, sample method.</p> <p>The initial drilling programme is now complete and a final assessment of sample recovery and condition is planned to be undertaken. The majority of drilling has had no material recovery issues.</p> <p>No quantitative analysis of samples weights, sample condition or recovery has been undertaken.</p> <p>Twinned drilling analysis has been undertaken at the project to compare RC versus historical HQ diamond drilling. No significant variance has been identified.</p> <p>Historical diamond drilling recovery has not been quantitatively assessed. A preliminary inspection of core photography was undertaken, and no material issues were noted.</p> <p>Methods taken to maximise historical sample recovery, quality, condition are not known.</p> <p>No analysis of historical samples weights, sample condition or recovery has been undertaken.</p>

Criteria	JORC Code explanation	Commentary
Logging	<ul style="list-style-type: none"> <i>Whether core and chip samples have been geologically and geotechnically logged to a level of detail to support appropriate Mineral Resource estimation, mining studies and metallurgical studies.</i> <i>Whether logging is qualitative or quantitative in nature. Core (or costean, channel, etc) photography.</i> <i>The total length and percentage of the relevant intersections logged.</i> 	<p>Geological logging of samples followed established company and industry common procedures. Qualitative logging of samples included (but was not limited to) lithology, mineralogy, alteration and weathering.</p> <p>Every metre (100%) of HCH drilling was geologically logged.</p> <p>The total length of the relevant mineralised interval(s) is provided in the main body of the report.</p> <p>Geological logs have been provided as part of third-party historical data, these have been reviewed and are deemed to be of an appropriate standard. All geological logs are fully available and Hot Chili has also completed verification and re-logging programme of historical diamond drill core where required</p>
Sub-sampling techniques and sample preparation	<ul style="list-style-type: none"> <i>If core, whether cut or sawn and whether quarter, half or all core taken.</i> <i>If non-core, whether riffled, tube sampled, rotary split, etc and whether sampled wet or dry.</i> <i>For all sample types, the nature, quality and appropriateness of the sample preparation technique.</i> <i>Quality control procedures adopted for all sub-sampling stages to maximise representivity of samples.</i> <i>Measures taken to ensure that the sampling is representative of the in situ material collected, including for instance results for field duplicate/second-half sampling.</i> <i>Whether sample sizes are appropriate to the grain size of the material being sampled.</i> 	<p>Splitting of RC samples occurred via cone splitter by the RC drill rig operators. Cone splitting of RC drill samples occurred regardless of the sample condition.</p> <p>RC drilling sample weights range from 0.3kg to 7.0kg, but typically between 2-4kg, and generally averaging around 3.2kg.</p> <p>Half core 2m sample intervals have been utilised for Hot Chili's HQ diamond core, in-line with previous historical diamond core sampling</p> <p>All samples were submitted to ALS Coquimbo (Chile) for multi-element analysis. The sample preparation included:</p> <p>Samples were then split via rotatory splitter to achieve ~1kg split,</p> <ul style="list-style-type: none"> – This split was then pulverised such that a minimum of 85% passes 75um and 150g was used for analytical pulp (ICP-AES), also 30g was used for fire assay fusion (gold). – 150g pulps derived from sample preparation (outlines in the previous sections) were used for multi-element analysis. ALS method ME-ICP61 involves a 4-acid digestion (Hydrochloric-Nitric-Perchloric-Hydrofluoric) followed by ICP-AES determination. – Samples that returned Cu grades >10,000ppm were analysed by ALS "ore grade" method Cu-OG62, which is a 4-acid digestion, followed by AES measurement to 0.001%Cu – Samples determined to be either oxide or transitional in weathering were also analysed using a copper soluble method Cu-AA05

Criteria	JORC Code explanation	Commentary
		<ul style="list-style-type: none"> – Pulp samples were subsequently analysed for gold by ALS method Au-ICP21; a 30g lead-collection Fire Assay, followed by ICP-OES to a detection limit of 0.001ppm Au. <p>Sample collection, size and analytical methods are deemed appropriate for the style of exploration.</p> <p>Historical Half diamond core was sampled. All samples were submitted to either ACTLABS (Chile), ACME Labs (now Bureau Veritas, Chile), ALS Global (Chile) or Andes Analytical Assay (Chile).</p> <p>Hot Chili Limited has verified the historical sampling methods, analytical techniques, and assay values. The Company has undertaken a high-level initial review of the SCM Carola QA/QC data.</p> <p>The lab specific methods used at the time of historical drilling are yet to be confirmed, and will be verified as part of the Company's due diligence.</p> <p>Sample length collection methods of historical diamond sampling are considered acceptable for the exploration of these styles of mineralisation.</p>
Quality of assay data and laboratory tests	<ul style="list-style-type: none"> • <i>The nature, quality and appropriateness of the assaying and laboratory procedures used and whether the technique is considered partial or total.</i> • <i>For geophysical tools, spectrometers, handheld XRF instruments, etc, the parameters used in determining the analysis including instrument make and model, reading times, calibrations factors applied and their derivation, etc.</i> • <i>Nature of quality control procedures adopted (eg standards, blanks, duplicates, external laboratory checks) and whether acceptable levels of accuracy (ie lack of bias) and precision have been established.</i> 	<p>All Hot Chili samples were assayed by industry standard methods through commercial laboratories in Chile (ALS Coquimbo). Typical analysis methods are detailed in the previous section and are consider 'near total' values.</p> <p>Hot Chili undertakes several steps to ensure quality of sampling. These include, but are not limited to, the use of duplicates, certified reference material and blank media:</p> <ul style="list-style-type: none"> – Routine 'standard' (mineralised pulp) Certified Reference Material (CRM) was inserted at a nominal rate of 1 in 50 samples. – Routine 'blank' material (mineralised quartz) was inserted at a nominal rate of 1 in 100 samples at the logging geologist's discretion. – Routine field duplicates for RC samples were submitted at a rate of 1 in 50 samples. – The drilling programme is still underway, and while the full analysis of quality parameters has yet to be undertaken, no significant issues have been noted. <p>No umpire checks were undertaken by Hot Chili during this period. The analytical laboratories provided their own routine quality controls within their own practices. No significant issues have been noted.</p> <p>All historical Cortadera samples were assayed by industry standard methods through commercial laboratories in Chile (ACTLABS, ALS Global, or Andes Analytical Assay).</p>

Criteria	JORC Code explanation	Commentary
		<p>Typical analysis methods used for historical samples included;</p> <ul style="list-style-type: none"> For copper and multi-element; either 4-acid or 3-acid digest followed by either an ICP-MS, ICP-AAS, or a HF digest with ICP-AES. E.g. ACTLAB method 3ACID-AAS, ALS method Cu-AA61, Andes Analytical Assay method (4A-AAS1E01 or ICP_AES_HH22). Gold grades were analysed for Fire Analysis (30g charge). E.g. ACTLABS method FA-AAS, ALS method Au-AA23, Andes Analytical Assay method AEF_AAS1EE9. <p>No formal assessment of SCM Carola standards, duplicates or umpire testing has been undertaken. Although a high level assessment of all assays which includes approximately 10% QAQC samples has been undertaken.</p> <p>No assessment of laboratories standards and practices has been undertaken for historical drilling.</p>
Verification of sampling and assaying	<ul style="list-style-type: none"> <i>The verification of significant intersections by either independent or alternative company personnel.</i> <i>The use of twinned holes.</i> <i>Documentation of primary data, data entry procedures, data verification, data storage (physical and electronic) protocols.</i> <i>Discuss any adjustment to assay data.</i> 	<p>The SCM Carola documents indicate that there has been some previous umpire sample test work. Hot Chili has not quantitatively reviewed this data.</p> <p>Hot Chili has commenced a programme of quarter core sampling across selected intervals of historical half diamond core</p> <p>Twinned drilling at the Cortadera project has commenced to compare RC to previous HQ diamond drilling. One twin drill hole is expected to be completed at each of the three porphyry bodies defined (Purisima, Cuerpo 2 and Cuerpo 3)</p> <p>All retained core and pulp samples are stored in a secured site and are available for verification if required.</p>
Location of data points	<ul style="list-style-type: none"> <i>Accuracy and quality of surveys used to locate drill holes (collar and down-hole surveys), trenches, mine workings and other locations used in Mineral Resource estimation.</i> <i>Specification of the grid system used.</i> <i>Quality and adequacy of topographic control.</i> 	<p>RC drill collars were set out using a hand held GPS and final collars were collected using a handheld GPS. The WGS84 UTM zone 19S coordinate system was used for all undertakings.</p> <p>Downhole surveys for RC drilling by Hot Chili were completed by the drilling contractor using a north-seeking gyroscope. Holes without downhole survey use planned or compass bearing/dip measurements for survey control.</p> <p>Drill collar survey methods undertaken by SCM Carola are yet to be verified, however all collars were located by Hot Chili and have been surveyed using a DGPS.</p> <p>Downhole surveys were completed on some of the Cortadera drilling. Holes without downhole survey use planned or compass bearing/dip measurements for survey control.</p>

Criteria	JORC Code explanation	Commentary
<i>Data spacing and distribution</i>	<ul style="list-style-type: none"> • <i>Data spacing for reporting of Exploration Results.</i> • <i>Whether the data spacing and distribution is sufficient to establish the degree of geological and grade continuity appropriate for the Mineral Resource and Ore Reserve estimation procedure(s) and classifications applied.</i> • <i>Whether sample compositing has been applied.</i> 	<p>The PSAD56 zone 19S coordinate system was used for all Cortadera undertakings</p> <p>The spacing and location of the majority of the historical diamond drilling at the Cortadera project is variable and ranges from approximately 80m to 300m. Sampling has been undertaken at 2m intervals.</p> <p>The spacing and location of data is currently only being considered for exploration purposes with additional RC and diamond drilling being undertaken by Hot Chili to establish a Mineral Resource.</p>
<i>Orientation of data in relation to geological structure</i>	<ul style="list-style-type: none"> • <i>Whether the orientation of sampling achieves unbiased sampling of possible structures and the extent to which this is known, considering the deposit type.</i> • <i>If the relationship between the drilling orientation and the orientation of key mineralised structures is considered to have introduced a sampling bias, this should be assessed and reported if material.</i> 	<p>Historical drilling completed and current drilling being completed at Cortadera is nominally perpendicular to mineralisation where practical and where known. The relationship of mineralisation widths to the intercepts of drilling undertaken by other previous companies is unknown and yet to be assessed, however copper-gold porphyry mineralisation is typically fairly homogenous meaning a limited chance of bias likely to be caused from drilling orientation.</p> <p>A list of the drill holes and orientations is stated in section 2 of this table for all historical diamond drilling and a list of drill holes reported in this announcement is contained within the body of this announcement.</p> <p>Considering the types of mineralisation at the Cortadera projects, the drilling orientations and subsequent sampling is considered to be unbiased in its representation for exploration reporting purposes.</p>
<i>Sample security</i>	<ul style="list-style-type: none"> • <i>The measures taken to ensure sample security.</i> 	<p>Hot Chili has strict chain of custody procedures that are adhered. All samples have the sample submission number/ticket inserted into each bulk polyweave sample bag with the id number clearly visible. The sample bag is stapled together such that no sample material can spill out and no one can tamper with the sample once it leaves Hot Chili's custody.</p> <p>The measures taken to ensure sample security during historical drilling are unknown. All retained core and pulp samples are currently stored in a secured site and are available for verification if required.</p>
<i>Audits or reviews</i>	<ul style="list-style-type: none"> • <i>The results of any audits or reviews of sampling techniques and data.</i> 	None completed.

Section 2 Reporting of Exploration Results

(Criteria listed in the preceding section also apply to this section.)

Criteria	JORC Code explanation	Commentary																																
Mineral tenement and land tenure status	<ul style="list-style-type: none">Type, reference name/number, location and ownership including agreements or material issues with third parties such as joint ventures, partnerships, overriding royalties, native title interests, historical sites, wilderness or national park and environmental settings.The security of the tenure held at the time of reporting along with any known impediments to obtaining a licence to operate in the area.	<p>Cortadera Project tenements and details:</p> <table><tr><td>Magdalenita 1/20</td><td>Corroteo 5 1/261</td><td>Las Cañas 1/15</td></tr><tr><td>Atacamita 1/82</td><td>Paulina 27 A 1/30</td><td>Cortadera 1/40</td></tr><tr><td>Paulina 11B 1/30</td><td>Paulina 15 B 1/30</td><td>Paulina 24 A 1/24</td></tr><tr><td>Paulina 10B 1/20</td><td>Paulina 22 A 1/30</td><td>Paulina 25 A 1/20</td></tr><tr><td>Amalia 942 A 1/10</td><td>Cortadera 1 1/200</td><td>Las Cañas Este 2003 1/30</td></tr><tr><td>Paulina 12B 1/30</td><td>Cortadera 2 1/200</td><td>Paulina 26 A 1/30</td></tr><tr><td>Paulina 13B 1/30</td><td>Cortadera 41</td><td>Cortadera 42</td></tr><tr><td>Paulina 14B 1/30</td><td>Corroteo 1 1/280</td><td>Lo Cañas 16</td></tr></table>	Magdalenita 1/20	Corroteo 5 1/261	Las Cañas 1/15	Atacamita 1/82	Paulina 27 A 1/30	Cortadera 1/40	Paulina 11B 1/30	Paulina 15 B 1/30	Paulina 24 A 1/24	Paulina 10B 1/20	Paulina 22 A 1/30	Paulina 25 A 1/20	Amalia 942 A 1/10	Cortadera 1 1/200	Las Cañas Este 2003 1/30	Paulina 12B 1/30	Cortadera 2 1/200	Paulina 26 A 1/30	Paulina 13B 1/30	Cortadera 41	Cortadera 42	Paulina 14B 1/30	Corroteo 1 1/280	Lo Cañas 16								
Magdalenita 1/20	Corroteo 5 1/261	Las Cañas 1/15																																
Atacamita 1/82	Paulina 27 A 1/30	Cortadera 1/40																																
Paulina 11B 1/30	Paulina 15 B 1/30	Paulina 24 A 1/24																																
Paulina 10B 1/20	Paulina 22 A 1/30	Paulina 25 A 1/20																																
Amalia 942 A 1/10	Cortadera 1 1/200	Las Cañas Este 2003 1/30																																
Paulina 12B 1/30	Cortadera 2 1/200	Paulina 26 A 1/30																																
Paulina 13B 1/30	Cortadera 41	Cortadera 42																																
Paulina 14B 1/30	Corroteo 1 1/280	Lo Cañas 16																																
Exploration done by other parties	<ul style="list-style-type: none">Acknowledgment and appraisal of exploration by other parties.	<p>Previous exploration at the project included:</p> <ul style="list-style-type: none">Historical surface workings1990's. Mount Isa Mining Company Chile undertook mapping, trench sampling, some geophysical surveying and limited drilling.2001. SCM Carola undertook field surveys including sampling. <p>2011-2012. Minera Fuego undertook surface mapping, drilling and surface sampling</p>																																
Geology	<ul style="list-style-type: none">Deposit type, geological setting and style of mineralisation.	<p>The Cu-Au-Mo mineralisation at Cortadera is associated with multiple porphyry intrusions. These porphyries have intruded into the early to mid Cretaceuos Totorralillo and Nantoco Formations (variously stratified chemical sediments, volcaniclastics, bioclastics, volcanic breccias, and andesitic volcanic units) along an apparent NW structure. These porphyries appear to exhibit typical Cu-Au porphyry veining networks and associated alteration styles. As typical in porphyry deposits, Cu and Au are strongly related, and higher-grade Cu and Mo are associated with high vein density.</p> <p>Local oxide mineralisation encountered in drilling and observed at surface suggests supergene mineralisation</p>																																
Drill hole Information	<ul style="list-style-type: none">A summary of all information material to the understanding of the exploration results including a tabulation of the following information for all Material drill holes:<ul style="list-style-type: none">easting and northing of the drill hole collarelevation or RL (Reduced Level – elevation above sea level in metres) of the drill hole collardip and azimuth of the hole	<p>The coordinates and orientations for all of the historical Cortadera drill holes are provided below:</p> <table><tr><th>hole_id</th><th>easting</th><th>northing</th><th>RL</th><th>Datum</th><th>azimuth</th><th>dip</th><th>hole_depth</th></tr><tr><td>FJOD-01</td><td>335750.0</td><td>6814312.0</td><td>977.2</td><td>PSAD56</td><td>180</td><td>-60</td><td>300.7</td></tr><tr><td>FJOD-02</td><td>335743.3</td><td>6814316.0</td><td>976.9</td><td>PSAD56</td><td>225</td><td>-69</td><td>542.6</td></tr><tr><td>FJOD-03</td><td>335598.1</td><td>6814752.7</td><td>1015.5</td><td>PSAD56</td><td>315</td><td>-70</td><td>323.1</td></tr></table>	hole_id	easting	northing	RL	Datum	azimuth	dip	hole_depth	FJOD-01	335750.0	6814312.0	977.2	PSAD56	180	-60	300.7	FJOD-02	335743.3	6814316.0	976.9	PSAD56	225	-69	542.6	FJOD-03	335598.1	6814752.7	1015.5	PSAD56	315	-70	323.1
hole_id	easting	northing	RL	Datum	azimuth	dip	hole_depth																											
FJOD-01	335750.0	6814312.0	977.2	PSAD56	180	-60	300.7																											
FJOD-02	335743.3	6814316.0	976.9	PSAD56	225	-69	542.6																											
FJOD-03	335598.1	6814752.7	1015.5	PSAD56	315	-70	323.1																											

Criteria	JORC Code explanation	Commentary							
<ul style="list-style-type: none">○ down hole length and interception depth○ hole length.● If the exclusion of this information is justified on the basis that the information is not Material and this exclusion does not detract from the understanding of the report, the Competent Person should clearly explain why this is the case.		FJOD-04	337169.0	6814370.0	1212.0	PSAD56	350	-60	278.0
		FJOD-05	334476.8	6814324.5	916.9	PSAD56	350	-75	511.5
		FJOD-06	335629.0	6814182.1	994.5	PSAD56	46	-49	587.9
		FJOD-07	335873.7	6814350.8	985.4	PSAD56	225	-48	514.8
		FJOD-08	335735.0	6814413.7	980.2	PSAD56	224	-70	589.9
		FJOD-09	336539.9	6813972.9	1034.5	PSAD56	271	-49	630.7
		FJOD-10	335296.7	6814717.2	961.1	PSAD56	227	-60	536.2
		FJOD-11	335201.2	6814625.9	959.5	PSAD56	227	-50	451.9
		FJOD-12	335663.7	6814454.5	983.4	PSAD56	227	-55	248.0
		FJOD-13	336111.3	6814383.4	1007.4	PSAD56	227	-60	623.4
		FJOD-14	335667.2	6814457.7	983.5	PSAD56	227	-55	600.0
		FJOD-15	336274.7	6814265.6	1029.6	PSAD56	227	-60	712.9
		FJOD-16	336440.3	6814154.7	1043.3	PSAD56	227	-65	710.4
		FJOD-17	336488.7	6813913.6	1034.9	PSAD56	227	-65	599.3
		FJOD-18	336644.4	6813840.6	1045.3	PSAD56	227	-60	629.4
		FJOD-19	335591.6	6814752.6	1015.2	PSAD56	54	-78	1123.4
		FJOD-20	335553.2	6814353.5	966.2	PSAD56	102	-60	697.9
		FJOD-21	335114.7	6814659.9	961.0	PSAD56	109	-74	350.3
		FJOD-22	336190.0	6814175.5	1006.0	PSAD56	30	-60	631.3
		FJOD-23	336191.4	6813924.8	1027.3	PSAD56	48	-65	1007.0
		FJOD-24	335027.2	6814621.1	970.4	PSAD56	110	-75	250.8
		FJOD-25	334956.0	6814633.1	970.6	PSAD56	110	-75	281.4
		FJOD-26	335001.4	6814553.8	953.4	PSAD56	110	-70	98.7
		FJOD-27	334996.7	6814552.3	953.4	PSAD56	290	-75	191.6
		FJOD-28	335260.9	6814125.9	974.6	PSAD56	305	-70	545.7
		FJOD-29	336493.4	6813914.7	1035.0	PSAD56	45	-75	715.2
		FJOD-30	336192.2	6814169.4	1006.2	PSAD56	45	-80	713.4
		FJOD-31	336805.8	6813742.7	1059.9	PSAD56	227	-60	728.1
		FJOD-32	336198.0	6813922.3	1027.4	PSAD56	90	-65	1085.6

Criteria	JORC Code explanation	Commentary																																																								
		<table><tr><td>FJOD-33</td><td>335631.8</td><td>6814180.8</td><td>994.4</td><td>PSAD56</td><td>45</td><td>-68</td><td>947.2</td></tr><tr><td>FJOD-34</td><td>335201.1</td><td>6814623.6</td><td>959.6</td><td>PSAD56</td><td>45</td><td>-70</td><td>647.3</td></tr><tr><td>FJOD-35</td><td>335915.0</td><td>6814060.0</td><td>1024.0</td><td>PSAD56</td><td>45</td><td>-70</td><td>845.2</td></tr><tr><td>FJOD-36</td><td>336303.0</td><td>6813740.0</td><td>1058.0</td><td>PSAD56</td><td>90</td><td>-70</td><td>1025.5</td></tr><tr><td>FJOD-37</td><td>335372.0</td><td>6814431.0</td><td>951.0</td><td>PSAD56</td><td>45</td><td>-70</td><td>1000.0</td></tr><tr><td>FJOD-38</td><td>335125.0</td><td>6814675.0</td><td>956.0</td><td>PSAD56</td><td>270</td><td>-60</td><td>446.5</td></tr><tr><td>FJOD-39</td><td>336942.0</td><td>6813225.0</td><td>1150.0</td><td>PSAD56</td><td>0</td><td>-90</td><td>743.5</td></tr></table> <p>All drill holes completed by Hot Chili have been reported in this announcement and previous announcements to the ASX made on 5th June 2019 and 9th May 2019.</p> <p>Any quoted results in the main report body, from historic or previous company drilling or sampling programmes, has been provided for historic and qualitative purposes only.</p> <p>All historic or previous company drilling results not included may be due to; a) uncertainty of result, location or other unreliability, b) yet to be assessed by Hot Chili, c) unmineralised, d) unsampled or unrecorded, or e) not considered material.</p>	FJOD-33	335631.8	6814180.8	994.4	PSAD56	45	-68	947.2	FJOD-34	335201.1	6814623.6	959.6	PSAD56	45	-70	647.3	FJOD-35	335915.0	6814060.0	1024.0	PSAD56	45	-70	845.2	FJOD-36	336303.0	6813740.0	1058.0	PSAD56	90	-70	1025.5	FJOD-37	335372.0	6814431.0	951.0	PSAD56	45	-70	1000.0	FJOD-38	335125.0	6814675.0	956.0	PSAD56	270	-60	446.5	FJOD-39	336942.0	6813225.0	1150.0	PSAD56	0	-90	743.5
FJOD-33	335631.8	6814180.8	994.4	PSAD56	45	-68	947.2																																																			
FJOD-34	335201.1	6814623.6	959.6	PSAD56	45	-70	647.3																																																			
FJOD-35	335915.0	6814060.0	1024.0	PSAD56	45	-70	845.2																																																			
FJOD-36	336303.0	6813740.0	1058.0	PSAD56	90	-70	1025.5																																																			
FJOD-37	335372.0	6814431.0	951.0	PSAD56	45	-70	1000.0																																																			
FJOD-38	335125.0	6814675.0	956.0	PSAD56	270	-60	446.5																																																			
FJOD-39	336942.0	6813225.0	1150.0	PSAD56	0	-90	743.5																																																			
Data aggregation methods	<ul style="list-style-type: none"><i>In reporting Exploration Results, weighting averaging techniques, maximum and/or minimum grade truncations (eg cutting of high grades) and cut-off grades are usually Material and should be stated.</i><i>Where aggregate intercepts incorporate short lengths of high grade results and longer lengths of low grade results, the procedure used for such aggregation should be stated and some typical examples of such aggregations should be shown in detail.</i><i>The assumptions used for any reporting of metal equivalent values should be clearly stated.</i>	<p>In reported exploration results, length weighted averages are used for any non-uniform intersection sample lengths. Length weighted average is (sum product of interval x corresponding interval assay grade), divided by sum of interval lengths and rounded to one decimal place.</p> <p>No top cuts have been considered in reporting of grade results, nor was it deemed necessary for the reporting of significant intersections.</p> <p>No metal equivalent values have been reported.</p>																																																								
Relationship between mineralisation widths and	<ul style="list-style-type: none"><i>These relationships are particularly important in the reporting of Exploration Results.</i><i>If the geometry of the mineralisation with respect to the drill hole angle is known, its nature should be reported.</i>	<p>Drilling at the Cortadera project was nominally perpendicular to mineralisation, where known and practical.</p> <p>The relationship of mineralisation widths to the intercepts of drilling undertaken by other previous companies is unknown and is currently being assessed.</p>																																																								

Criteria	JORC Code explanation	Commentary
<i>intercept lengths</i>	<ul style="list-style-type: none"> If it is not known and only the down hole lengths are reported, there should be a clear statement to this effect (eg 'down hole length, true width not known'). 	
<i>Diagrams</i>	<ul style="list-style-type: none"> Appropriate maps and sections (with scales) and tabulations of intercepts should be included for any significant discovery being reported. These should include, but not be limited to a plan view of drill hole collar locations and appropriate sectional views. 	Refer to figures in announcement. A plan view of reported significant intersection drill holes are included.
<i>Balanced reporting</i>	<ul style="list-style-type: none"> Where comprehensive reporting of all Exploration Results is not practicable, representative reporting of both low and high grades and/or widths should be practiced to avoid misleading reporting of Exploration Results. 	<p>It is not practical to report all exploration results as such unmineralised intervals. Low or non-material grades have not been reported, however a full list of drill hole coordinate and orientation details is stated above.</p> <p>All drill hole locations are reported and a table of significant intervals is provided in the announcement.</p>
<i>Other substantive exploration data</i>	<ul style="list-style-type: none"> Other exploration data, if meaningful and material, should be reported including (but not limited to): geological observations; geophysical survey results; geochemical survey results; bulk samples – size and method of treatment; metallurgical test results; bulk density, groundwater, geotechnical and rock characteristics; potential deleterious or contaminating substances. 	Available data from historic or previous exploration parties includes some surface mapping, surface geochemical surveys and geophysical surveys (Ground magnetics, airborne magnetics and Induced Polarisation surveys). Where possible, historic exploration data has been supported by selected sampling and geological mapping undertaken by Hot Chili.
<i>Further work</i>	<ul style="list-style-type: none"> The nature and scale of planned further work (eg tests for lateral extensions or depth extensions or large-scale step-out drilling). Diagrams clearly highlighting the areas of possible extensions, including the main geological interpretations and future drilling areas, provided this information is not commercially sensitive. 	Potential work across the Cortadera project may include further verification drilling, sampling, assaying and QA/QC. Other further work may also include mapping, surface sampling, ground or airborne geophysics as well as in-fill or exploratory drilling.